

# November 2025

60p  
FREE Digitally!

FOLLOW US on  
**FACEBOOK**

## Eastcombe, Bussage & Brownhill Newsletter

### 24 HOUR PARCEL POST BOX!

In the biggest redesign in Royal Mail's 175-year history, 3,500 solar-powered post boxes are being introduced across the UK – including in Eastcombe!



Following a successful pilot in Hertfordshire, existing post boxes are being adapted, with solar panels fitted. These power a digitally-activated drawer, allowing customers to deposit small parcels, up to the size of a shoe box. *'If you have a Royal Mail label on your parcel, and it fits, put it in a post box and we'll do the rest,'* say Royal Mail.

To use a solar post box, you need to have a parcel with a pre-paid label, which can be bought online. A barcode scanner on the post box opens a drop-down drawer that is big enough to accommodate parcels that do not fit in the traditional post box slot. Use the [Royal Mail app](#) to request proof of posting for the parcel.

#### Step-by-step instructions:

1. Label your parcel: Ensure your parcel has a printed and prepaid postage label with a 2D barcode.
2. Locate the scanner & scan the barcode: Hold the parcel up to the scanner to read the barcode.
3. Open the drawer: The scanner will activate a drawer, which will open for you to place your parcel inside. Place your parcel in the drawer. The drawer will then close.
4. Request proof of posting (optional): If you need proof of posting, use the Royal Mail app. Go to "services" or a similar option, and follow the on-screen steps.

**You can, of course, also send parcels at Eastcombe Post Office during opening hours.**

### EASTCOMBE ACT OF REMEMBRANCE

**Saturday 8th November,  
10.45am**, at the war memorial  
in Dr Crouch's Road.

All are welcome at this short service, which includes the reading of names followed by two minutes silence.



### HILLTOP BABY & TODDLER

RIDE ON'S CHILDREN'S SONGS BALL PIT



TUNNELS AND TENTS SOFT PLAY



BABY TOYS PUZZLES AND GAMES



**EASTCOMBE VILLAGE HALL  
EVERY TUESDAY 9.30-11AM  
£3.50 ONE CHILD £5 FOR TWO  
CHILD MINDERS WELCOME**

[www.facebook.com/groups/hilltopbabyandtoddler](https://www.facebook.com/groups/hilltopbabyandtoddler)

### COULD YOU HELP to FILL THIS SPACE?

#### The newsletter needs some extra help!



Produced entirely by volunteers, we want the newsletter to be a true community effort, so the more people involved the better.

Can you help to create the newsletter (desktop publishing skills helpful, but full training given)? We also need occasional helpers to proofread the newsletter, and to collect and distribute printed copies.

You can also help by contributing regularly. Nature notes? Book reviews? Seasonal poems, Thought for the Month? All ideas welcome.

Please contact [eastcombenewsletter@btinternet.com](mailto:eastcombenewsletter@btinternet.com) for more details or an informal chat.

### BISLEY WINTER ARTISAN MARKET

16<sup>TH</sup> NOVEMBER 2025

10.30AM TO 1.30PM

BISLEY WI VILLAGE HALL GL6 7AX

CAKES - BREAKFAST ROLLS - REFRESHMENTS - TAKE AWAY MEALS  
SAVOURIES - PRESERVES - PLANTS - BIRD BOXES - HOME TEXTILES  
GIFTS - HAIR ACCESSORIES - GLASS WORKS - WOOD WORK - HAND MADE  
CARDS - SILVER JEWELLERY AND MORE

DOGS ON LEADS WELCOME - FREE ENTRY  
[HTTPS://WWW.FACEBOOK.COM/BISLEYARTISANMARKET/](https://www.facebook.com/bisleyartisanmarket/)

RAFFLE ON THE DAY IN AID OF  
GLOUCESTER SCOO B DOO NEONATAL UNIT



To receive a FREE digital copy of the newsletter every month, please contact [eastcombebandnews@gmail.com](mailto:eastcombebandnews@gmail.com). Printed copies, 60p each, are available from Eastcombe Stores, Frith Community Café & Chalford Parish Centre.

Please send items for the December newsletter to [eastcombenewsletter@btinternet.com](mailto:eastcombenewsletter@btinternet.com) by **NOON on 17th November**.

## BISLEY-WITH-LYPIATT PARISH COUNCIL NEWS [www.bisley-with-lypiatt.gov.uk/](http://www.bisley-with-lypiatt.gov.uk/)

Contact the Clerk: [admin@bisley-with-lypiatt.gov.uk](mailto:admin@bisley-with-lypiatt.gov.uk)

The **actions from the meet and greet** on Saturday September 13<sup>th</sup> identified to the PC and our County Councillor Gary Luff, who was present. These include:

- 1) Lack of mobile signal across the Parish
- 2) Blanket reduction of speed limit to 20mph
- 3) Ongoing concern over the condition of our local road network
- 4) Repaint white lines at junctions and safety signs on the road warning of school zone
- 5) Installation of patrol/warning light outside the school in Eastcombe.

We subsequently have had feedback from GCC with respect to the **mobile signal issues**. Atlas Towers are reinvestigating the extent of the 'dead zone' and will establish a potential solution. Our Clerk also undertook to establish the nature of so called 'Ghost Towers' -that exist within the Parish but do not appear to be functioning. As soon as we have a definitive response and potential solution, we will share with you.

The status to gain our **Neighbourhood Plan** (NP). Public consultation is underway with public meetings scheduled. It is important to attend one of these events to gain a full understanding of the benefits the NP provides to the Parish and you – the Parishioners.

A reminder—There are two **vacancies on the Parish Council**. One specifically relates to planning support. If you feel you would like to become a Parish Councillor and make a difference to our community -please contact Heather -our Clerk or indeed any of the Parish Councillors to find out more.

PC meetings start at 7.30pm on the first Wednesday of each month at Bisley Village Hall. All welcome.

Colin Clifton, Chair, Eastcombe Ward: [colin.clifton@bisley-with-lypiatt.gov.uk](mailto:colin.clifton@bisley-with-lypiatt.gov.uk)

### BISLEY-WITH-LYPIATT DRAFT NEIGHBOURHOOD PLAN: PUBLIC CONSULTATION

**13th October - 28th November 2025**

Bisley-with-Lypiatt Parish Council are pleased to announce that after many years work we will be publishing our Parish Draft Neighbourhood Plan for Public consultation.

#### Step 1: Read the Draft Neighbourhood Plan:

- Download from [bisleyeastcombeoakridge-ndp2030.org.uk](http://bisleyeastcombeoakridge-ndp2030.org.uk)
- Read a hard copy
- Borrow a hard copy from the Clerk's office

#### Step 2: Tell us your thoughts by filling in a feedback comment form:

- Digitally or via a download on [bisleyeastcombeoakridge-ndp2030.org.uk](http://bisleyeastcombeoakridge-ndp2030.org.uk) by **midnight 28<sup>th</sup> November**
- As a hard copy

The Parish Council will be holding 3 drop-in sessions between 7pm & 9pm:  
**28<sup>th</sup> October** (Oakridge Lynch Village Hall)  
**4<sup>th</sup> November** (Bisley Village Hall)  
**11<sup>th</sup> November** (Eastcombe Village Hall)

## MARTINMAS

Since 1918, 11th November has been Armistice Day. However, the date used to be Martinmas.



St Martin's Day, or Martinmas, also known as Old Halloween or All Hallows Eve, is the feast day of Saint Martin of Tours. In the Middle Ages, it was an important festival in many parts of Europe, particularly Germanic-speaking regions, where it marked the end of the harvest season and beginning of the "winter revelling season". Like so many festivals, it has its roots in pre-Christian times: in the ancient Roman world, 10 November marked the beginning of winter. It is also linked to the Celtic festival of Samhain.

Traditions include feasting on 'Martinmas goose' (legend tells that St Martin, while trying to avoid being ordained bishop, hid in a pen of geese whose cackling gave him away), drinking the first wine of the season, and mumming. In some German and Dutch towns, processions of children with lanterns are led by a horseman representing St Martin, who gives out treats. Traditionally, in Ypres, children hung stockings filled with hay on Martinmas Eve, awaking next morning to find them filled with gifts, said to be left by St Martin as thanks for the fodder for his horse.

In the Rhineland, Martinmas is marked by bonfires. In the fifteenth century, these were so numerous that the festival was nicknamed *Funkentag* (spark day). In the 19th century, young people danced around the fire and leapt through the flames, with the ashes later strewn on the fields to make them fertile.

Martin of Tours (died 397) was a Roman soldier who was baptized as an adult and became a bishop in Gaul. He is best known for the legend whereby he cut his cloak in half with his sword to give half to a beggar dressed in rags in the depth of winter. That night Martin had a vision of Jesus Christ wearing the half-cloak.

In the 6th century, church councils decreed fasting for 56 days from Saint Martin's Day to Epiphany (6<sup>th</sup> January), excluding weekends. Equivalent to the 40 days of Lent, given its weekend breaks, this was called Quadragesima Sancti Martini (Saint Martin's Lent, or literally "the fortieth of") but is rarely observed now, although it has links to the current tradition of Advent.

Martinmas eventually died out in England as a result of the English Reformation, the emergence of Guy Fawkes Night on 5th November, changes in farming and the Industrial Revolution. Today, 11th November is marked as Armistice Day, when the guns of the Great War finally fell silent after four years of war.

## November

Comes and  
November goes,  
With the last red berries  
And the first white snows.

With night coming early  
and dawn coming late,  
And ice in the bucket  
and frost by the gate.

The fires burn  
and the kettle sings,  
And earth sinks to rest  
Until next spring.

By Elizabeth Coatsworth





## CHALFORD PARISH COUNCIL NEWS

Chalford Parish Centre, 50 Gerald's Way, Chalford, GL6 8FJ; 01453 887204

[info@chalford-glos.gov.uk](mailto:info@chalford-glos.gov.uk) [www.chalford-glos.gov.uk](http://www.chalford-glos.gov.uk) [Facebook](#).



**Community Speedwatch Group:** Our wonderful Community Speedwatch Group are really having an impact. When they are out and about people slow down their speeds, even if it is only because of their presence. The more frequently they can go out the better their effect will be at making our roads safer, but they desperately need more volunteers. If you can spare a couple of hours each month, then please contact the Parish office on 01453 887204

**Support for our Food Bank:** A huge thank you to Bussage Primary School and Chalford Hill School for their incredibly generous donations to our food bank table. We help many people in the parish who are struggling a little with the cost of living, and they have really benefited from your generosity.

**Santa is coming soon:** We are delighted to announce that Santa will be visiting our Parish office again this year. This very popular free event is open to everyone, you just need to pick up your Santa's Pass from our offices (to ensure Santa brings enough treats). Keep an eye on our website, Facebook and notice boards for our announcement of the date.

**Scams in our Parish:** We have heard of several scams going on in our area. One involves a message telling you someone has spent money on your Amazon account, another purports to be from Action Fraud and asks for your card information, the third is a call by fake police officers and bank officials. Please be vigilant. Police, Bank officials and Action Fraud will NEVER ask for payment or card details. Check your Amazon account, but do not click on any links in the message.

**Sad News:** We are deeply saddened to be writing about the passing of former Councillor Stephen Lee. Stephen was a dedicated councillor, who approached everything he did with integrity, thoughtfulness, and a genuine desire to make a difference. But more than that, he was a lovely human being, always wearing a smile, always kind, always ready to listen.

Stephen's passing is a huge loss to the Council, and we will feel his absence deeply.

## EASTCOMBE PRIMARY SCHOOL

Exciting News! Eastcombe Primary School is taking part in the Tesco Blue Token Scheme. This is a fundraising venture where the school hopes to raise money to further develop the playgrounds. Please support when you can by placing a blue token in the Eastcombe School box whenever you are shopping in the big Tesco in Stroud, the little Tesco Express in Bussage and other local Express stores, such as Stroud Merrywalks, Nailsworth and Paganhill. We are part of the blue token scheme for the period October - January (perfect timing for seasonal shopping!). Please spread the word to family and friends who live locally - every token helps! Thank you for your support and thank you Tesco.

This half term, in Art, Hedgehog Class have been working with charcoal. They looked at the work and style of Laura McKendry, a London-based artist, and how she uses charcoal to produce large drawings of dogs; they then gave it a try with some lovely results.



Owl Class, in their science lessons, have been researching our solar system. They created posters about the Milky Way, different planets, the sun, and meteors. These posters have now been collated to make a wonderful classroom display - well done Owl Class!

Eastcombe Primary School's final Open Day this year for parents/carers looking for a school for their children is on **Wednesday 19<sup>th</sup> November** 9.15am to 10.45am. This will be an opportunity to look around the school, speak to the Head Teacher and meet other members of our team. There's also an opportunity to join us for an afternoon of fun at our Pre-School Stay & Play session on **Thursday 4<sup>th</sup> December** between 2.15pm and 3pm. No appointment needed for either session!

Another date for your diary: **Sunday 30<sup>th</sup> November** 2pm to 4pm at Eastcombe Village Hall. Join us for a wreath making afternoon! Just £30 per person includes a wreath making kit, candle decoration, foliage, pull bow, Christmas beverage and treat. Places limited so hurry and contact [stephanie.france88@gmail.com](mailto:stephanie.france88@gmail.com) to be sure of a place!



## SAD: FIGHTING WINTER SADNESS...

The changing season can be difficult to cope with. As the days get shorter, some people start to feel low. This is known as Seasonal Affective Disorder, or SAD.

### What is SAD?

Around two million people across the UK suffer from SAD, also known as 'winter depression' due to it being amplified in the late autumn and winter. The main symptoms are similar to those of depression, and can include low mood, low energy and eating more, particularly chocolate or high carbohydrate foods. SAD is about three times more common in women than it is in men.

November is a month where SAD can start to rear its depressing head – the clocks have gone back and the weather is colder (and often wetter). In addition, November is a month of reflection and remembrance, not yet into the sparkle of December and the anticipation of Christmas.

### Can SAD be treated?

The answer is yes! Light boxes or daylight lamps in your home, which mimic the sun, can help. You can also adopt activities into your routine that maximise light and activity – not easy, as, with any kind of depression, SAD saps energy and motivation.

Start small: prepare the garden for winter (although don't make it TOO tidy – see page 6!), dig the allotment or join a local group that gets together to chat – or gets outdoors – the more company, exercise & the greater exposure to light, the better you can feel. Walking groups, exercise groups, volunteering locally – all can help to boost our mood (as the saying goes - there's nothing that cheers you more than helping others!). However, if you or someone you know suffers persistent low mood and other symptoms for more than two weeks, they should speak to a GP. In the most severe cases, a GP may prescribe antidepressants.

So, if you're not looking forward to the shorter, darker days of winter, don't despair - there are ways to help yourself. **And remember – it's only 7 weeks until the days start to get longer again!**



If you feel like you're losing everything,  
Remember that  
trees lose their leaves  
every year and they  
still stand tall and wait for  
better days to come.



## THE LITTLE FREE ART GALLERY, BUSSAGE

Autumn has arrived, with seasonal art and unique creativity on display!

Our community gallery is here to spread joy and celebrate creativity on the hilltop so why not drop by and take a look at what's in the Gallery this month!

**We invite everyone to:**

**Take a piece of art  
Leave a piece of art  
Or just take a look around!**

The #littlefreeartgallerybussage can be found on The Avenue, Bussage off Cowswell Lane GL6 8AT. What3words:///dates.barn.hawks

if you are a local artist, craftsperson, maker or photographer, we'd love to exhibit your work.

**Please continue to spread the word and we look forward to seeing you soon!**



## USE IT or LOSE IT!

**Did you know that the Eastcombe telephone box is one of the few operational boxes still in existence?**

With mobile signal very poor in some parts of the village, including around the green, it's important to keep this box operational. If you can, please use the box occasionally, but regularly, so that BT have no excuse to disconnect it.

### HOW TO USE THE BOX:

1. You will need **3 x 20p pieces**.
2. Insert the coins.
3. Dial the number you wish to call.

**REMEMBER: 999 CALLS ARE ALWAYS FREE.**



## HILLTOP GARDENING CLUB

[www.hilltopgardeningclub.org.uk](http://www.hilltopgardeningclub.org.uk)

**Meeting 7th October: Speaker Robert Bryant: Garden Photography:**

Ostensibly a 'how to do it' of garden photography, Robert Bryant (ARPS) guided us through equipment choices to stress-free photo-printing, framing and storage, with prints to peruse post-talk. However, the presentation encompassed more than technical competence, inducting the listener into patient looking, pressing the delete key and enjoying the serendipity of the moment. Photographs of gardens from Highnam Court and Highgrove to Versailles and Villa Carlotta, Lake Como, were pressed into pedagogic service as exemplars of compositional devices such as structure, verticals, depth of field, low viewpoint and foreground dominance, all enhanced by creative use of light and weather.

Following the grand gardens were subject-rich images to be found on our own patch. The familiar yet frequently overlooked insects in our gardens were evident in the startling images. Close observation of insects through a camera lens may make entomologists of us all as Robert detailed the symbiotic relationships between insect, environment, biodiversity and the gardener. Good to know that the frisky bugs are best photographed very early in the morning in an immobile, sleepy state.

Our droll speaker, with a precise but light lecturing touch, showed how to capture the almost surreal architectural quality of plants, using light-boxes, while accepting that 'taste' also plays a part in the judgement of quality. Robert Bryant's image of a robin in full-throttle song was a reminder that the quotidian even hackneyed is worth another look through a lens against received judging wisdom.

**Next Hilltop Gardening Club meeting: Please note** the seasonal change of venue and time for our next meeting on **November 4<sup>th</sup>**, at our winter quarters of the **Eastcombe Scout HQ, 1:30pm to 3:30pm.**

Pam Meecham



## Eastcombe Baptist Chapel

A service is held on Sunday mornings, at 10:30am at the chapel in Dr Crouch's Road, Eastcombe.

## EASTCOMBE VILLAGE GROUP (EVG)

### Dates for the Diary:

- **Newcomers Coffee Morning - Saturday 6 December, from 10.30am at The Lamb Inn:** we invite anyone who has moved into Eastcombe in the last 3 years to join us for coffee and a chat. We can let you know about activities within the village.
- **Eastcombe Photographic Competition 2025/2026:** The competition to find the best photograph which shows the uniqueness and beauty of our Cotswold village has been launched. Photographs can be anything you feel reflects our wonderful village. The winning entry will be made into a limited edition wooden jigsaw puzzle, which can be purchased in autumn 2026. Entry forms with terms and conditions will be available shortly. Entries should be submitted by mid-September 2026.
- **Eastcombe Christmas tree event – Tuesday 2 December, at 6pm:** This is a joint event with Eastcombe Primary School. We will start at the school and then move to the Green, once the school windows and tree have been lit.
- **Eastcombe Village Quiz – Saturday 28 February:** The annual quiz will be held in the Village Hall with Scott Sissons as the quizmaster. A ploughman's supper will be served. Tickets will be on sale in the New Year.

### Other events:

- **Family Bingo Event:** We are looking at dates for this around Easter. If you would be interested in helping, please contact me.
- **Wine Walk 2026:** This will be held at the end of July or the beginning of August. Priority will be given to those living in Eastcombe, and those on the EVG mailing list.
- **Wine tasting:** We are planning a wine tasting later in 2026.

### Other matters discussed at our recent EVG meeting:

- **Draft Neighbourhood Plan:** Mike Eccott stressed the importance of everyone in Eastcombe commenting on the plan, which is on the parish website. The plan sets out the building standards and requirements for any development within the parish. The plan's importance has grown with the plan to abolish Stroud District Council. **There is a public meeting in Eastcombe Village Hall on Tuesday 11 November at 7pm.**
- **Public phone box:** With a poor mobile signal in some parts of the village, this is an important lifeline for emergencies. We need people to use the phone box regularly so this shows on BT records. It needs 3 x 20p coins. It is a case of "use it or lose it".
- **Planting Bulbs on the Green:** Kathy Eccott and members of the ladies walking group are planting bulbs on the Green, bought with money donated by the now defunct Hilltop Choir.

Peter Scott: [peterhscott@btinternet.com](mailto:peterhscott@btinternet.com)

Contact [cissons52@gmail.com](mailto:cissons52@gmail.com) to join the mailing list.

Follow [Eastcombe Village Group](#) on Facebook.

## St Michael's & All Angels, Bussage

### Services this month are:

- **Sunday 9th Nov: Holy Communion, 9.30am**
- **Sunday 16th Nov: Morning Prayer, 9.30am**
- **Sunday 16th Nov - Cafe Church, 2.30pm, Eastcombe Village Hall (see poster below)**
- **Sunday 23rd Nov: Holy Communion, 9.30am**

On other Sundays there are services in different parts of the Benefice.

### CAN YOU PLAY THE ORGAN?

We are looking for someone to help once a month by playing the organ during our communion service (normally 4 hymns). It is lovely to have the organ rather than recorded music if possible. There is no requirement to be a virtuoso, nor a churchgoer, and the church can be made available if you would like to practise. Our current organist will be able to give advice and encouragement.

If you are interested, please email [bussagechurchwarden@gmail.com](mailto:bussagechurchwarden@gmail.com).

See [www.bisleybenefice.org.uk](http://www.bisleybenefice.org.uk) or join our mailing list: [pewslipsbisley@hotmail.com](mailto:pewslipsbisley@hotmail.com).

For weddings, funerals & baptisms, contact  
Revd. Sue Murray:  
[vicar@bisleybenefice.org.uk](mailto:vicar@bisleybenefice.org.uk)



**HILLTOP CAFE CHURCH**

Christian Worship for those of  
all faiths and none.

**Sunday 16<sup>th</sup> Nov**

**2.30pm**

**EASTCOMBE VILLAGE HALL**

BROUGHT TO YOU FROM  
THE PARISH OF BUSSAGE & EASTCOMBE

Outdoor cafe vector created by upliya - www.freepik.com

**After more than 50 recipes(!), Carol is taking a well-earned break. In her place, we welcome a series of guest contributors.**

**This month, Sue Crouch shares her recipe for**

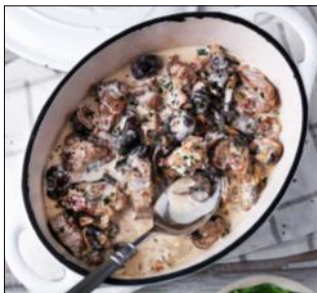
## **PAPRIKA PORK CASSEROLE**

**Delicious winter comfort food - use locally sourced pork to help British farmers. A great supper for family or friends, & an easy one pot recipe ideal for a special meal if camping, caravanning or boating.**

**Preparation and cooking time: one hour. Serves 4**

### **INGREDIENTS:**

500g/600g diced lean pork  
1 large onion  
30g butter or margarine  
1 level tablespoon plain flour/cornflour  
2 teaspoons paprika  
150ml sweet sherry\*\*  
150ml stock  
115g mushrooms (button/quartered)  
150ml double cream/low fat alternative\*  
Pepper as seasoning, to taste



### **METHOD:**

1. Sauté the diced pork and chopped onion in the butter for 2/3 minutes, then add the mushrooms.
2. Cook for another 2/3 minutes then stir in the flour (cornflour for gluten free), and paprika.
3. Add sherry and stock, bring to the boil whilst stirring.
4. Reduce heat and simmer for 40 minutes, or until the pork is tender (a little longer if using cheaper cuts of pork).
5. Taste and season accordingly.
6. Stir in the cream.
7. Serve with mashed potato, rice, boulangere potatoes or gratin dauphinoise and green vegetables.

\*For a healthier option, replace the cream with fat free fromage frais or Philadelphia lowest cream cheese.

\*\*Red wine stock can be used instead of sherry, but won't be so delicious.

## **GET PLANTING!**

**November is the ideal month for planting many flowers and vegetables - saving you time in spring and giving your plants a head start when the weather warms up. A few ideas for what to get in the ground now:**



- Sow Sweet Peas in deep pots of multi-purpose or peat-free compost. Keep them in a cold frame or cool greenhouse over winter, pinching out the tops once they have 3 pairs of leaves. Plant outside during a mild spell from March to May.
- Tulip and allium bulbs are perfect for planting now, as colder weather reduces the risk of fungal disease.
- Vegetables such as broad beans can be planted now for an early crop next year. Garlic needs a cold spell to grow a large bulb, so November is the ideal time to plant. Some varieties of onions and shallots are also great for autumn planting.
- Plant bare root fruit trees and bushes (they are dormant in winter) ready for a full season of growth next year.
- Plant salad leaves such as mustards, spinach and mizuna on a bright windowsill or in a greenhouse, for harvesting during the winter months.

**A little effort now will get you ahead of the game come spring—and your early produce will be the envy of your friends!**

## **HILLTOP FILM CLUB THE SALT PATH**

**Saturday 15th November  
7.30pm**

**at Eastcombe Village Hall**

**Gillian Anderson & Jason Isaacs**

A beautiful, life affirming film, **THE SALT PATH** is the story of husband and wife, Raynor and Moth Winn's 630-mile trek along the beautiful, rugged SW coastline. Removed from their home, they keep walking in the hope that, in nature, they will find solace and acceptance.



**GUESTS: £5**

**MEMBERS: COMPLIMENTARY  
ICES: £3**

**ALL WELCOME!**

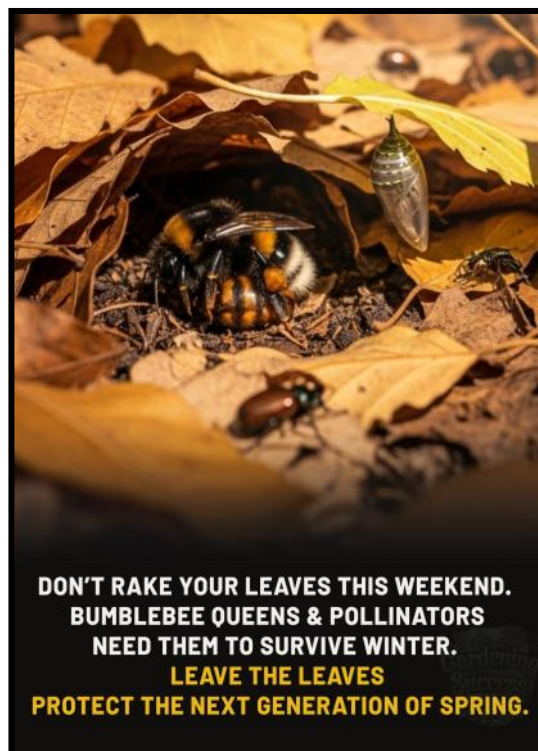
## **GOSPEL CHOIR SINCERE PRAISE**

From Worldwide Mission Fellowship, London, UK

**Saturday 8th November 2025**  
From 2:00pm to 4:00pm  
Chalford Baptist Church  
Coppice Hill, Chalford,  
Stroud, Gloucestershire  
GL6 8DZ

**Sunday 9th November 2025**  
From 10:30am  
Chalford Baptist Church  
Coppice Hill, Chalford,  
Stroud, Gloucestershire  
GL6 8DZ

**Parking**  
Disabled parking  
only due to limited  
space.



**DON'T RAKE YOUR LEAVES THIS WEEKEND.  
BUMBLEBEE QUEENS & POLLINATORS  
NEED THEM TO SURVIVE WINTER.  
LEAVE THE LEAVES  
PROTECT THE NEXT GENERATION OF SPRING.**



## Feeling a bit lethargic as November arrives? You could be experiencing **BRUMATION!**



Brumation is a winter dormancy period for reptiles and amphibians, similar to hibernation in mammals. Triggered by shorter days and colder temperatures, it is a natural and essential process for survival.

### What happens during brumation?

- **Reduced activity:** Reptiles and amphibians become significantly less active, often hiding away for long periods.
- **Slower metabolism:** Their body temperature and heart rate drop, and metabolic functions slow down.
- **Less appetite:** They will eat less, or stop eating entirely.
- **Not a deep sleep:** Unlike true hibernation, they may still wake up occasionally during this period.

### Look out for the signs & support your pets:

- Gradually reduce the temperature and light in your pet's enclosure.
- Ensure they have access to fresh water at all times.
- Avoid disturbing them, they need to be left alone.
- Do not try to keep them active—this can be harmful.

Contact your vet if you see signs of distress, significant weight loss, or if your pet seems unwell. It's crucial to distinguish normal brumation from a potential illness.

## Brumation Station

When the world gets cold and the sun gets shy,  
I feel my lizard brain say, "*Time to lie!*"

No need for coffee, no motivation —  
I'm boarding the train to **Brumation Station**.

No emails, no chores, no social relation,  
Just basking in blissful reptile hibernation.  
My gecko's my guru, my tortoise my guide,  
As we both take naps not quite justified.

The fridge hums softly, the world keeps turning,  
But my get-up-and-go's gone without warning.

Don't call it lazy — it's energy conservation,  
A totally natural cold-blooded vacation.

So if you see me stopped in mid-conversation,  
You'll know that I've slipped into **brumation!**

### INTERESTED IN LOCAL HISTORY?

Join the **Eastcombe & Bismore Local History Group** on Facebook.



## CHALFORD MARKET

CRAFTY & DELICIOUS @ CHALFORD  
10am-1pm

**Next Markets (indoor)**  
**Sunday 2<sup>nd</sup> November**  
**Sunday 7<sup>th</sup> December**



FRITHWOOD SURGERY PATIENTS' PARTICIPATION GROUP (PPG)  
invites

**FRITHWOOD PATIENTS AGED OVER 75**  
to a

## CHRISTMAS PARTY

**SATURDAY 13<sup>TH</sup> DECEMBER**  
**2-4pm**

at

**EASTCOMBE VILLAGE HALL**

PLEASE COLLECT A BOOKING FORM  
FROM FRITHWOOD SURGERY  
RECEPTION TO RESERVE YOUR PLACE.

PLACES ARE LIMITED SO WILL BE ALLOCATED  
ON A 'FIRST-COME, FIRST-SERVED' BASIS.



## SAVE THE DATE

### NEW-TO-EASTCOMBE COFFEE MORNING



Are you new/newish to the village? Would you like the opportunity to meet other newcomers, plus some of us who have been around for some time? If so, come along to **The Lamb Inn on Saturday 6<sup>th</sup> December from 10.30 to 11.30.**

There will be coffee and home-made cake, and the opportunity to find out about some of the many village activities.

Did you know that we have our own Shanty Group, Newsletter, Gardening Club, Café Church, Ladies Walking Group, Local History Group...and so much more.....and that the village hall has one of the best 'dancing floors' in the area?! It's a great place to live and we would very much like to welcome you – hope you are able to come along to say Hello!

For more details: Chris Sissons [csissons52@gmail.com](mailto:csissons52@gmail.com)



## VILLAGE HISTORIES... THE HILLTOP FALLEN

**November is the month of remembrance. It is impossible in this limited space to adequately pay tribute to every hilltop man who fell – a fact which only underlines the scale of the loss. This November, we tell the story of just six of those from the hilltop who made the ultimate sacrifice, while remembering them all.**

### **Private Wallace Christopher CLISSOLD 2nd Battalion, Grenadier Guards**

Wallace was born in 1894 at Rose Cottage, Bussage, one of eight children of Emily and John W Clissold, an engine driver. He attended Bussage National School, and in 1911 was living near Rock House, with Wallace, aged 16, working as a general labourer. He enlisted into the 2nd Bn. Grenadier Guards and, with the British Expeditionary Force, was sent to France. He was killed in heavy fighting near the village of Soupir, Northern France, on 14th September 1914 and is buried at the Soupir Communal Cemetery.



### **Stoker 1st Class Charles William DAVIS, HMS Good Hope**

Charles was born in Eastcombe in 1880, the eldest of five children of William, a stick worker, and Sarah. Shortly after his 19th birthday in 1899, Charles joined the Royal Navy. In 1909, he was invalided out of service, but remained on the Reserves list. He married Lily, a cloth worker from Minchinhampton, and they lived in Eastcombe, with Charles working as a labourer. In summer 1914, many Reservists were recalled to serve the Fleet, and Charles resumed his old rank on HMS Good Hope. The ship was sunk with all hands on 1st November 1914, killing all 919 men. Charles is also commemorated on the Portsmouth Naval Memorial.

### **Private Christopher Francis ALDUM, Prince Albert's (Somerset Light Infantry) 6th Battalion**

Born in Chalford in 1892, the second son of John Eagle Aldum and Sarah Naomi Phelps, Christopher lived later in Brownhill, where his father worked as a coachman. By 1911, he was working as a dock labourer in Bristol, living with his aunt. He joined Prince Albert's 6th (Service) Battalion, Somerset Light Infantry, arriving in Belgium in May 1915 as part of the 43rd Brigade, 14th (light) Division. He was killed in August, lost somewhere in the chaos of the front. He has no known grave but is commemorated on the Menin Gate, Ypres.

### **Private Frank Christopher ALDRIDGE, 7th Battalion, Gloucester Regiment**

Born in Eastcombe in 1891, Frank was baptised in the School Chapel, the son of Charles, carpenter, and Rosa. The family lived in The Street, and, in 1911, Frank was working at the Phoenix Ironworks in Thrupp. He enlisted in September 1914 and was killed on 8th August 1915, although it was not until January 1917 that he was confirmed dead, aged 25. Those left behind included a fiancée, Miss Celia Mayo of Chalford.

### **Private Montague DAVIS, 9th Battalion Gloucestershire Regiment**

Born in Bussage in 1893, son of Priscilla and Eli, Montague initially worked as a stonemason with Gardner and Sons of Stroud. Living for many years at Hampton View, on The Ridge, he played cricket and football for Bussage and was also a member of the Reading Room. Enlisting into the 9th Battalion, he travelled to France in September 1915, then Greece as part of the 78th Brigade, 26th Division. Whilst there was little actual fighting, disease took a dreadful toll and Montague died on 13th January 1916. He was buried in Lembet Military cemetery, with a memorial service held in Bussage church, attended by family, team mates and work colleagues.



### **Private Eber WEST, 6th Battalion, South Wales Borderers**

Born in 1892 in Brownhill, the son of Thomas and Esther West, the family lived also in Eastcombe and Bussage. Eber initially worked as a carter, joining the Transport Bn. Gloucestershire Regt in 1916, then the 6th Bn South Wales Borderers (a Pioneer Regt.) as part of the 25th Division. Landing in Le Havre on 25th September 1915, in early 1916 he was involved in the defence of Vimy Ridge before moving to the Somme front in June. He died there on 17th October 1916.

WE WILL REMEMBER THEM.



## NAME THAT VIEW!

**How well do you know our area?**



October's photo was taken from France Lynch, towards Butlers Hill, Avenis Green.

This month's photo is again taken locally. Can you identify it?

The answer will be revealed in the December issue.

## WHAT'S ON in NOVEMBER?

**2 Nov:** Chalford Market, 10am-1pm, CSSC

**4 Nov:** Hilltop Gardening Club, Eastcombe Scout HQ, 1:30-3:30pm

**Saturday 8 Nov:** Eastcombe Act of Remembrance, 10.45am, war memorial, Dr Crouch's Road

**11 Nov:** B-w-L Draft Neighbourhood Plan Public Consultation, 7-9pm, Eastcombe Village Hall

**17th NOV: NEWSLETTER DEADLINE**

**15 Nov:** Hilltop Film Club, 7.30pm, Eastcombe Village Hall

**16 Nov:** Hilltop Café Church, 2.30pm, Eastcombe Village Hall/Bisley Artisan Market, 10.30am-1.30pm, Bisley WI Village Hall

**19 Nov:** Eastcombe Primary School Open Day, 9.15-10.45am

**30 Nov:** Wreath making afternoon, 2-4pm, Eastcombe Village Hall (see page 3 for booking details)