

# June 2026

60p

FREE by email (details below)

FOLLOW US  
on **FACEBOOK**

## The Hilltop Newsletter



**EASTCOMBE SWIFTS:**  
AN UPDATE  
*See PAGE 3*



### FROM MUD to MODERN: CHALFORD'S NEW HOME FOR TENNIS & PICKLEBALL OPENS ITS DOORS...

On May 17th, popping corks and cheering crowds replaced creaking floorboards as Chalford Tennis & Pickleball Club officially opened their brand-new tennis pavilion. Over 100 people gathered to celebrate a transformation that is more than just bricks and mortar; it's about opening the sport to everyone.

For years, the 'old hut' had seen better days: damp, mouldy walls, a 'mud bath' of a lawn and uneven slabs, making access a challenge. It has been replaced with a warm, modern and inviting space designed to last for the next 40 years—the place to congregate after a match, and perfect partner to the award-winning bar at Chalford Sports and Social Club. The heartbeat of the project was inclusivity, and the increased accessibility has opened the door to wheelchair tennis.

This achievement is a testament to the club's incredible volunteer spirit: from car washes to Easter egg trails, with a special shout-out to Nathan, who cycled to Wimbledon and back in a single day, raising a staggering £2,500. The club also received £15,000 from Sport England to help get Chalford community active.

To honour the journey, the club chose four VIPs to open the pavilion: Bidy and Jeff, representing the rich history of the club, and Alice and William, the bright future of the next generation. The afternoon was rounded off with Pimms, scones, and a spirited Americano tennis tournament.

The club would like to thank Alistair from Williams Eco Builds, who helped to bring this vision to reality, and volunteers Steve, Mitch & Julia who were a huge part of bringing the project together.

#### Find out more about the club:

Website: <https://clubspark.lta.org.uk/ChalfordTennisClub>

Facebook page: [Chalford Tennis & Pickleball Club](#)

The Chalford Sports & Social Club is proud to present:

**CSSC \*\*\* Casual Six \*\*\*** Chalford favourites!

They're back!!!

**Saturday 13th June 2026**  
Doors open: 7pm - midnight

Tickets: £11

Tickets from CSSC or email [infochalfordssc@gmail.com](mailto:infochalfordssc@gmail.com)

All proceeds from ticket sales will be donated to:  
**Maggie's (cancer support) & Prostate Cancer**

**FRITH YOUTH CENTRE** Volunteer in sessions **PART OF OUR COMMUNITY**

For many young people, the youth centre is a fun, safe place to hang out and develop skills and interests. For others, it's a lifeline through childhood's ups and downs. As a charity, we really need your help to provide this worthy service to local children!

Volunteer regularly, or on an ad hoc basis.

You don't have to be a youth professional, but someone nice, who cares and wants to support young people.

Monday, Thursday or Friday 3.30 - 7.30pm.

Work with ages 10-18 in an informal environment.

Volunteer for just an hour, half the session, the whole session. Whatever works!

Positive  
Confident  
Role-model  
Good vibes  
Team player

Enquire here >>> [admin@frithyouthcentre.org.uk](mailto:admin@frithyouthcentre.org.uk)

**TECH SUPPORT... ODD JOBS... GARDEN CARE... AND MORE!** Need help?

My name is James & I am an 18 year old looking to earn money before starting university.

I am reliable & have experience across a range of different jobs, including those listed above. References available.

If you have any jobs that need doing, please get in touch: [jamescalverley0@gmail.com](mailto:jamescalverley0@gmail.com)

**"Make it"** Craft & Chat Group **Free to attend**

Wednesday 10am - 12.30pm

Informal craft group - bring along your own craft or learn from members of the group

Tea / Coffee / Hot Chocolate available from the club & Cakes & More sweet treats

CSSC Chalford Sports & Social Club

To receive a **FREE** digital copy of the newsletter every month, please contact [adminhilltopnewsletter@gmail.com](mailto:adminhilltopnewsletter@gmail.com). Printed copies, 60p each, are available from Eastcombe Stores & Post Office, Frith Community Café & Chalford Sports & Social Club. Please send items for the July newsletter to [eastcombenewsletter@btinternet.com](mailto:eastcombenewsletter@btinternet.com) by **NOON on 17th June.**

## BISLEY-WITH-LYPIATT PARISH COUNCIL NEWS: EASTCOMBE WARD

[www.bisley-with-lypiatt.gov.uk/](http://www.bisley-with-lypiatt.gov.uk/) Contact the Clerk: [admin@bisley-with-lypiatt.gov.uk](mailto:admin@bisley-with-lypiatt.gov.uk)

**Lack of mobile signal:** Atlas Towers have provided data confirming the potential location, size and appearance of a 'single pole', camouflaged, black mast which would provide mobile signal coverage for Eastcombe. Our questionnaire together with the background for a mobile mast is ready and will be available shortly for your input. I would stress that lack of mobile signal isn't restricted to mobile phone use but for folk who depend on signal for any medical device they wear. And of course, if frequenting the many amazing walks in the valley, think of the issue if you had a medical emergency.

**Condition of road network:** Now clearly a national concern. Our local roads have had potholes filled but not repaired. I would urge you to not ignore the poor state of our roads and gullies but to report them on 'Fix my Street' web site. The more folk that do so will help elevate our immediate local concerns.

**Speed of vehicles driving in and around the village:** Drivers, cyclists please be fully aware of your speed and road conditions and drive/ride accordingly - **PLEASE!**

The significant wear on **Eastcombe village green** is being addressed, and we are working to resolve this in conjunction with the installation of a drop kerb access to the lower bench on the green.

The Bisley-with-Lypiatt Parish Council AGM will take place on May 21<sup>st</sup> at Bisley Village Hall. Please come along to speak to your councillors and express your concerns or congratulations!

Colin Clifton, Chair, Eastcombe Ward: [colin.clifton@bisley-with-lypiatt.gov.uk](mailto:colin.clifton@bisley-with-lypiatt.gov.uk)

### EASTCOMBE VILLAGE HALL

With wifi installed, hall users are now able to make online transactions and in many cases use card readers. Additionally, mobile phone signal within and immediately outside the hall provides a much greater level of comfort, as well as being vital in any emergency.

We have had an Amazon fire stick installed, offering hall users the ability to stream data. The very popular Hilltop Film Club are investigating streaming along with National Theatre Live. One key focus will be offering the facility for educational programmes to village schools.

The new doors into the main hall, new notice-board in the lobby and relocated coat hangers have been well received. Gerry is currently in the process of making further improvements.

To use the hall and see for yourself the facilities now on offer, please contact Teresa: [teresadrover@hotmail.co.uk](mailto:teresadrover@hotmail.co.uk)

As previously advised, we now have a new 35-year lease for the hall. We had to register this with HM Land Registry which we did on May 15<sup>th</sup>—well within the statutory time requirement. Thank you to David Rhodes for his help in achieving this.

We are seeking an individual to take on the roles of hall support and Secretary (we hold 3 formal meetings a year).

If this opportunity inspires you please contact Colin Clifton: 07958 761507.

Colin Clifton - Chair Eastcombe Village Hall

### EASTCOMBE PRIMARY SCHOOL

The children have had a very busy term with a range of trips and extra-curricular activities. Squirrel and Hedgehog classes visited Cotswold Wildlife Park for a Science trip; they also enjoyed a lovely visit to Copsegrove Farm. Owl class visited The Black Country Museum as part of their History studies.

The whole school also took part in First Aid training. The children were taught about the recovery position, CPR, bleeding, anaphylaxis and choking. They enjoyed the sessions, asked lots of questions, and showed confidence with hands-on practice using a dummy and their partners; such important life skills! Our wider curriculum programme offers the children new opportunities and fosters a love of learning.

A big thank you to our outgoing ESA Committee for their hard work, organising fabulous fundraising activities over the last few years; and a very warm welcome to our incoming Committee. We look forward to working with you and staging fun events for our whole school family.

### EVER CONSIDERED BECOMING A SCHOOL GOVERNOR?

Eastcombe Primary School is looking to grow its Governor Team, seeking people from our community and surrounding parishes with skills and experience that will contribute to the work of the collective.

School governors are volunteers working with the headteacher to help identify the school's key priorities, how to deliver them, to set and maintain school policies and to ensure money is appropriately spent. Importantly, governors are there to question and challenge school leaders on the standard of education provided, working with the headteacher to ensure all pupils have the best opportunity to learn in a safe, happy environment and to help deliver the best education possible for the pupils at the school.

Becoming a school governor also offers benefits, including networking opportunities and the chance to gain new knowledge about finance, policy and education management. Most importantly, you will make a tangible difference in your local community. You do not need to be a specialist in education.

To find out more, email Giles Webber: [chair@eastcombe.gloucs.sch.uk](mailto:chair@eastcombe.gloucs.sch.uk)



### INTERESTED IN LOCAL HISTORY?

Join the **Eastcombe & Bismore Local History Group** on Facebook.



# CHALFORD PARISH COUNCIL NEWS

Chalford Parish Centre, 50 Gerald's Way, Chalford, GL6 8FJ; 01453 887204  
[info@chalford-glos.gov.uk](mailto:info@chalford-glos.gov.uk) [www.chalford-glos.gov.uk](http://www.chalford-glos.gov.uk). [Facebook](#).



**Allotment Season:** Allotment season is upon us, and we currently have some allotment plots available at our Middle Hill and France Lynch site. If you have been thinking about growing your own fruit or vegetables, now is a great time to get started. If you are interested in taking on a plot, or would like more information, please get in touch with Karen who will be happy to help: [assistantclerk@chalford-glos.gov.uk](mailto:assistantclerk@chalford-glos.gov.uk).

**Thank you!** A very big thank you to Interiors@36 for donating wonderful bingo prizes for the Friday lunch club. The club runs every Friday from Frithwood Youth Centre between 12-2, booking isn't necessary so if you would like to have a good chat and a light bite, please feel free to come along.

**Frithwood Health Walk:** Frithwood Health Walk is back in full swing, these are held on Wednesday mornings. This very popular walk starts at Frithwood Surgery at 10am and finishes at The Parish Centre for a tea or coffee, biscuits and a good chat. If you would like to join the group, booking isn't necessary simply meet at 10am on any Wednesday morning.

**Valley Playing Field:** The public meeting regarding the Valley Playing Field was held on Thursday 23 April and was very well attended. We would like to extend our sincere thanks to everyone who came along and contributed to the evening's discussions. The full minutes of the meeting are available on the Chalford Parish Council website under "Further News."

**Foodbank:** A gentle reminder that the Parish Council office in Chalford continues to run a small food bank to support local residents in need. Donations for this very worthwhile cause are always greatly appreciated. If you are able to contribute, your support would make a real difference to members of our community.

Thomas Keble School PTA  
**Paint and Sip Evening**  
With local Artist Amy Perkins  
Friday June 26th 6.30 - 9.00pm at School  
Tickets £ 18 for an adult - includes all materials - or £ 25 for an adult and child together  
children (10+) must be accompanied by adult  
- Available from TicketSource  
A relaxed session of painting and mark-making - watercolours, oil pastels, paint sticks, shadow tracing - move between different areas of subject and technique.  
Come and be creative - have fun in good company - Fully stocked bar, snacks and cakes  
All proceeds go back into school



## BisCAN EASTCOMBE SWIFTS

The first wave of Swifts has arrived back in Eastcombe from overwintering in Africa; four birds were seen circling the Baptist Chapel in early May. These birds are established pairs that return faithfully to their traditional nesting sites, and a bird was seen entering one of the nest boxes on the Chapel that was first used last year.



Swifts are an endangered/red-listed species which has been declining rapidly in recent decades; Eastcombe's once thriving colony is no exception and numbers have dwindled alarmingly. Last year we located seven breeding pairs in various locations around the village, and we will be monitoring the colony again this year to see how our birds are faring. An update will follow at the end of the breeding season.

The approximate location of the nest boxes around Eastcombe can be found on a fascinating RSPB sponsored app called SwiftMapper ([www.swiftmapper.org.uk](http://www.swiftmapper.org.uk)), with the known occupied nests from previous years also shown, together with records of 'screaming parties' of Swifts seen racing round the rooftops.



Tony Perry

## Plants & Gardening sale Friday 12th June 10-noon

Raising funds for CSSC Renovation fund - Accessibility

SELECTION OF FLOWER AND VEGETABLE PLANTS / SEEDLINGS AVAILABLE.

IF YOU HAVE SPARE PLANTS OR PRODUCE YOU WISH TO DONATE PLEASE BRING THEM ALONG!

POP INTO COMMUNITY COFFEE MORNING FOR A FRIENDLY WELCOME.  
ALSO GARDENING BOOKS & MAGAZINES AVAIL

LET'S GROW TOGETHER!



## EASTCOMBE & BUSSAGE OPEN GARDENS 2026



Thank you to everyone who visited the 15 hilltop gardens over the early May bank holiday — including the hardy walkers who made it down Fidges Lane and back up again. We hope the ice creams at the bottom and the Eastcombe Village Hall refreshments at the top kept spirits high.

The day was a great success, enabling a generous donation to Longfield and other national charities. Special thanks to Olive Turner and her brilliant volunteers for the Village Hall refreshments.

We're also grateful to our local sponsors: Aberlink, The Lamb Inn, The Ram Inn, Adept Garden Services, Manor Glazing, Bisley Farm Shop, R & J Espley window cleaning services, and, last but not least, Rob, Josie & Theresa of Toadsmoor Garage — now officially Re-Tyring after many years of loyal support to our group.

Glen Beswitherick

## SUMMER ON THE COTSWOLD CANALS



The summer season has officially begun, and there's no better time to explore the Cotswold Canals. Our volunteer-led guided walking tours are now underway, offering a fantastic opportunity to discover both the rich history of the canals and the incredible restoration work happening today.

June is the perfect time to join us on a towpath walk. The trees are in leaf, blossom is in full bloom, wildlife is thriving, and the warmer weather makes for ideal walking conditions. We're introducing new routes this year. Take a walk from Fromebridge to Saul Junction to see the developing nature reserve and learn about the challenges ahead, or enjoy a more social route from Wallbridge to Stroud Brewery, exploring community life along the canal. All walks start at 10:30am, with dates through to September.

Meanwhile, restoration continues at pace. We are currently working on Phase 1B, reconnecting Stonehouse to Saul Junction - a key 6km stretch of the Stroudwater Navigation. Thanks to support from the National Lottery Heritage Fund and our partners within Cotswold Canals Connected, progress has been remarkable. You'll be amazed at how much has changed, particularly if you join us on the Westfield Bridge walk, where volunteers have made significant improvements at John Robinson Lock and Meadow Mill weir over the winter months.

The towpath is open, so do come and see the work for yourself or join a guided walk. You can also support us by visiting our Charity Book and Music Shops in Brimscombe (Tue, Thu, Sat) and Stonehouse (Wed, Fri, Sat), open 10am-4pm.

Find out more and book tickets at [www.cotswoldcanals.org](http://www.cotswoldcanals.org)

citizens advice  
Stroud & Cotswold Districts

## SHOPPING ONLINE? BEWARE OF RETAIL SCAMS



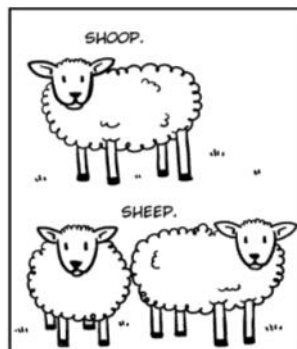
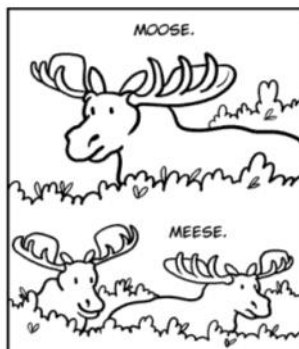
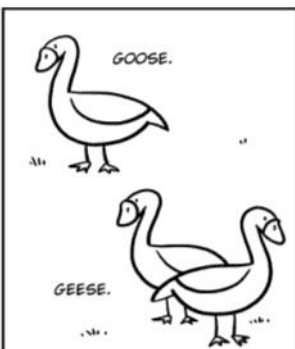
Have you bought something online and found it looks nothing like the images shown? Retail scams where sellers deliberately mislead people and make refunds difficult to obtain are becoming increasingly common.

Some companies convince people they're based in the UK by using **deceiving brand names and UK websites or postal addresses**, with AI-generated images of fake products and shops. Low-quality items are then shipped from overseas, with refunds requiring costly international return shipping fees - the sellers hope this will put customers off pursuing their refund.

If you've paid by debit or credit card, you may be able to get a refund using the chargeback scheme. Credit card purchases between £100 - £30,000 may be covered by section 75. For help with online shopping problems or other consumer issues, call the national **Citizens Advice Consumer Helpline 0808 233133**.

Citizens Advice helps with a wide range of issues. For information and guidance, visit [citizensadvice.org.uk](http://citizensadvice.org.uk).

To speak to a local adviser in the Stroud and Cotswold Districts, visit [citizensadvice-stroudandcotswold.org.uk](http://citizensadvice-stroudandcotswold.org.uk) or call us on **0808 800 0510**.



©2016 CHRIS HALLBECK • MAXIMUMBLE.COM • @CHRISHALLBECK • FACEBOOK.COM/MAXIMUMBLE • CHRISHALLBECK.TUMBLR.COM

Eastcombe WI Meeting  
Tuesday 16 June 2026  
From 7.15pm—9.00pm  
Eastcombe Village Hall



## Winchcombe Meteorite



Speakers: Rob & Cathryn Wilcock

Open meeting—all welcome

(Donations appreciated)

For further information contact  
Jean Buxton 07817 441363 email [jeanabuxton@hotmail.co.uk](mailto:jeanabuxton@hotmail.co.uk)



SATURDAY 20<sup>TH</sup>  
JUNE 2026



TICKETS

£15  
VIA EVENTBRITE  
£12.50  
MEMBERS PRICE  
FROM CSSC

CHALFORD SPORTS  
AND SOCIAL CLUB  
HIGHFIELD WAY, FRANCE LYNCH



Be Our Guest

at the

Stuart Singers Summer Concert

Holy Trinity Church, Minchinhampton

Friday 12th June at 7:30pm

Saturday 13th June at 4:00pm

Musical Director: Helen Sims Accompanist: Matthew Sharp

Beneficiary: The Mindset courses of Mindsong

mindsong  
music for dementia



Tickets £15 / Friends of Stuart Singers £12.50  
(Under 16s free with an accompanying adult on Saturday)



Tickets available online at [www.stuartsingers.com](http://www.stuartsingers.com)  
and from Market Stores Minchinhampton  
[www.stuartsingers.com](http://www.stuartsingers.com) [www.facebook.com/stuartsingers](https://www.facebook.com/stuartsingers)

## Eastcombe Baptist Chapel

A service is held at 10.30am on Sundays at the chapel in Dr Crouch's Road, Eastcombe.

## EASTCOMBE VILLAGE GROUP

**Newcomers Coffee Morning:** We plan to hold a 'Welcome to Eastcombe' coffee morning on 3rd October, where those who have recently moved into Eastcombe are especially welcome. To learn more, please add your name to our mailing list (see below).

**EVG Mailing List:** Plans and events are advised through our mailing list. To join, please contact [csissons52@gmail.com](mailto:csissons52@gmail.com)

**Wine Walk:** This takes place on Sunday 26 July, 4pm to 8pm, offering a variety of wines from 5 different wine regions. Tickets will be £20 each (giving vouchers for 5 glasses of wine) and will be on sale in June.

**Photographic Competition:** Please contact Colin Clifton for an entry form. We are hoping for interesting images of our village.

Peter Scott: [peterhscott@btinternet.com](mailto:peterhscott@btinternet.com)

To join the EVG mailing list, contact [csissons52@gmail.com](mailto:csissons52@gmail.com)

Follow [Eastcombe Village Group](#) on Facebook.

# KEEP IT LOCAL!

## Coach House Tutors

Specialist 11+ Tuition for the **NEW** Grammar School Exam

Ros and Claire are ready to teach the new FSCE 11+ exam for Marling, Stroud High School and the other Gloucestershire grammar schools.

One to one tuition in person in Nailsworth or Oakridge.

[www.facebook.com/coachhousetutors](http://www.facebook.com/coachhousetutors)  
[learn@coachhousetutors.co.uk](http://learn@coachhousetutors.co.uk)

**Claire 01453 834153**

**Would you like a free shout out for YOUR business? Contact [eastcombenewsletter@btinternet.com](mailto:eastcombenewsletter@btinternet.com)**

## St Michael's & All Angels, Bussage

Services this month are:

- **Sunday 14th June: Holy Communion, 9.30am**
- **Sunday 21st June: Morning Prayer, 9.30am**
- **Sunday 21st June: Cafe Church, Eastcombe Village Hall, 2.30pm** (see poster on back page)

On other Sundays there are services in different parts of the Benefice. For full details please visit [facebook.com/BisleyBeneficeandFriends/](https://facebook.com/BisleyBeneficeandFriends/) or join our mailing list by contacting [pewslipsbisley@hotmail.com](mailto:pewslipsbisley@hotmail.com).

For weddings, funerals & baptisms, contact Revd. Sue Murray: [vicar@bisleybenefice.org.uk](mailto:vicar@bisleybenefice.org.uk)

## COOKERY CORNER

### Anne Klinkosz shares her recipe for WARM SWEET POTATO & PEARL BARLEY SALAD

**Serves 4 (6 as a side dish) Preparation 15 mins  
Cook 50 minutes**

#### INGREDIENTS:

- 200g pearl barley
- 600g sweet potato
- 2 tablespoons olive oil
- 2 teaspoons smoked paprika
- 100g chopped walnuts
- 180g wild rocket

#### Dressing:

- 6 tablespoons extra virgin olive oil
- 4 tablespoons balsamic vinegar
- 2 tablespoons lemon juice

#### METHOD:

1. Preheat oven to 220°C/gas mark 6.
2. Bring the pearl barley to the boil in 1 litre of water, then simmer for 45/50 minutes until water is absorbed and pearl barley is tender.
3. Cut the sweet potato into wedges, toss with oil and smoked paprika, season with salt and pepper and put on a baking tray.
4. Roast for about 30 minutes until golden and softened, adding the walnuts in for the last 5 minutes.
5. Whisk dressing ingredients together in a large bowl until combined.
6. Add all other ingredients and toss to mix. Serve.



## EASTCOMBE WI

Our April meeting speaker was Mike Kelly, with his wife Wendy and their guide dogs. Danny is retired and his guide dog is Nicky. He told of losing his sight in 1984, being registered blind aged 30. Over the years his guide dogs have enhanced his life, giving him confidence, independence and allowing him to work and socialise. They encourage passers-by to stop and speak. Mike, who relied on his white cane before getting his first guide dog in 1989, told us of their training from puppy to retirement. He also spoke of the changes caused by Covid: no cafes open and little traffic around which affected Danny who seemed to think his work was finished. Danny retired in 2021 and is now the beloved family pet. The Guide Dog Society keeps in touch with the dogs and owners throughout the dog's life.

Our May meeting saw a return visit from Helen Plumb, a jewel expert from Winchcombe, who spoke about opals. Originally found in Australia in the late 19th century, now also in Mexico, Brazil and latterly in Ethiopia, they are formed between narrow layers of different rocks and often difficult to mine. There are 3 varieties: white—crystalline and pale with some iridescence, boulder—brown but iridescent—and black which are the most desirable, with flashes of rainbow colours. There are fakes—some quite acceptable—but as ever 'buyer beware'. Helen brought some beautiful examples which were much admired and she was thanked by Glenys.

Our **next meeting on 16th June** is open but donations from visitors would be welcome. Our speakers, Rob and Cathryn Wilcock, will give a talk on The Winchcombe Meteorite. See poster on page 4 for details.



## FRITHWOOD SURGERY PATIENT PARTICIPATION GROUP (PPG)



The PPG held another successful First Aid training session on Wednesday 29<sup>th</sup> April. A very informative session that was well received by all participants, it was delivered by Sophie McCracken, assisted by her daughter, who played a very willing 'patient' when needed. Lots of areas were covered, including CPR, the use of defibrillators, choking, head injuries, strokes and wounds.

**Have you noticed our noticeboard?** The waiting room now has a large PPG noticeboard, with lots of information on it. Why not take a look at it next time you visit the surgery?

### How can you help the PPG?

- We have held various first aid training evenings but are there any other health aspects that you would like covered at PPG evening sessions?
- Do you have any suggestions about activities that you think would be good for the PPG to organise?
- Would you like to become a member of the 100 Club to help the PPG raise funds?
- Become a member of the PPG Committee.

We would love to hear from you. Please contact any of our committee members or email [frithwoodppg@gmail.com](mailto:frithwoodppg@gmail.com).

# FESTIVAL WEEKEND

Corpus Christi

# HOPE

CHRIST CHURCH  
CHALFORD

# Peace

6 - 7 JUNE

**Saturday 2 - 5pm**  
Local History slides & talk  
Favourite hymns  
Film 'Living in the Valley'  
Free tea, coffee & cake

**Sunday 5 - 8pm**  
Dressing of Tankard Spring  
Procession to church 5pm  
Choral Evensong 5.30pm  
Free buffet meal

**EVERYBODY WELCOME**

# CHALFORD CAR BOOT

Discover Hidden Gems at Our Car Boot! Treasures Await at Every Pitch!

**Sunday 28<sup>th</sup> June 10am - 12pm**  
**@ Chalford sports & Social - GL6 8LZ**

**Pre booking now available**  
**(optional) [chalfordafc@gmail.com](mailto:chalfordafc@gmail.com)**  
**sellers welcome on the day**

IN AID OF CHALFORD AFC - NON PROFIT ORGANISATION

## HILLTOP FILM CLUB

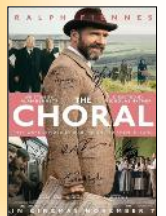
## THE CHORAL

**Saturday 20th June**

**7.30pm at**

## Eastcombe Village Hall

1916 Yorkshire & a local choral society recruits a disparate group of townspeople to perform Elgar's *The Dream of Gerontius*. Stars Ralph Fiennes & Alun Armstrong.



**GUESTS: £5**

**MEMBERS: COMPLIMENTARY**

**ICES: £3**

**ALL WELCOME!**

## THE LITTLE FREE ART GALLERY, BUSSAGE

The Little Free Art Gallery is a free community gallery for small-scale art. Anyone can "Take a piece of art, leave a piece of art, or just take a look!". The displays constantly change as visitors drop by, and it's been a busy month.

As the weather has warmed up, a fantastic mix of creations have been arriving at the gallery, including photography, embroidery, origami and even alien sculptures!

Our mission is simple: **To spread joy and celebrate creativity** on the hilltop — and everyone is welcome to be part of it!

We're always delighted to welcome new visitors, so come along and chat to us! We also post regular updates and photos of current artwork and seasonal displays on local Facebook groups.

**Find the gallery on The Avenue, Bussage GL6 8AT.**  
**What3Words: ///dates.barn.hawks**



## Community Coffee

**Mornings**

**Fridays 10-12**

Books

Jigsaws

Village info

Plants & gardening

All items available for a

donation to CSSC

Renovation fund



## HILLTOP GARDENING CLUB [www.hilltopgardeningclub.org.uk](http://www.hilltopgardeningclub.org.uk)



Hilltop Gardening Club 5<sup>th</sup> May. Speaker, Kevin Alviti "Our Homestead & How We Got Here".

Many aspired to 'the good life' inspired by River Cottage and self-sufficiency guru John Seymour, but we rarely hear first-hand, lived-experience relayed with such energy and humour as our speaker Kevin Alviti was able to conjure. His account of growing-up on a hard-pressed tenant farm within a mantra of self-reliance, coupled with being a 'useful child' with early live-stock farming responsibilities, proved formative. Post-school our speaker found his vocation in a carpentry course considered then an inferior option to a university degree. Undaunted Kevin became a carpenter by trade, working with traditional and medieval skills. Combining woodwork with those farming foundations from childhood, Kevin, wife and family have created their Homestead: a small holding with big ambitions. Adept at adapting to change, recycling, rebuilding and repurposing land and buildings, the family created orchards and fruit and veg beds beyond the quotidian: variety evidently is key to self-sufficiency. Mixing child-care and woodworking with the Homestead's hard-graft of planting, foraging and preserving, cooking is a combined family enterprise. If this sounds against the grain of contemporary life, the reality is anything but an isolated rural idyll. At the core of Kevin's life and work is a commitment to family and to the wider communities beyond the Homestead's self-reliance perspective. From contributing to play-groups, being a scout leader, mentoring and schools, Kevin and family are also integrated into the wider-community.

A blogger, lecturer and writer for woodworking magazines, Kevin arrived with beautifully carved wooden tools and harvest boxes for sale.

An entertaining and uplifting evening. We look forward to hearing more about the unusual fruit and veg that Kevin grows in our programme next year.

Pam Meecham

**Next meeting: Eastcombe Village Hall, 7<sup>th</sup> July. Heather Collins: 'The Blackness Banks Nature Reserve'. All welcome.**

### COMING UP ROSES!

June is the month of roses - widely considered to be the most popular garden flower in the world.



Cultivated for over 5,000 years, they have come to represent luxury, love and power as well as being used in medicine and perfumery. So how do you grow them?

In general, roses need a sunny position with fertile, moist but well drained soil - and they love it if you enrich the soil with well-rotted manure or garden compost.

Potted roses can be planted at any time of year, and can be bought in flower so you know exactly what you're getting. They are also surprisingly tolerant of drought once their deep root system is established, so drier summers needn't be a problem.

If replacing old roses with new ones, try planting the new ones in a strong cardboard box, such as a wine box, filled with fresh soil. This will reduce the effects of 'rose replant disease' which can occur in soil where roses have been grown for a long time. By the time the rose grows through the box the soil will have had the chance to recover and the rose growing strongly.

On poorer soil, try the wilder, species roses such as *Rosa moyesii* and 'Canary Bird' - these have pretty single flowers early in the season and colourful hips in autumn (but do get big!)

The old-fashioned rose varieties only tend to have one flush of flowers but these often give a glorious show and are becoming popular once again for their wonderful colour and scent.

Repeat flowering roses should be dead-headed throughout the summer to reward you with a wonderful show well into autumn.

The Eastcombe Gardener

### HHONIC HEDGEHOG TONIC

**Want to support your local hedgehogs?  
Hhonic can help!**



Over the last 4 years, Debby, who runs Minnie's Wildlife Rescue and Hedgehog Hospital, in Bussage, has developed a special tonic to help boost the health of wild hedgehogs. 100% organic, it is made for sprinkling daily on wet or dry hedgehog food, helping to very gently reduce internal parasites and improve hedgehog health.

Hedgehogs in the UK are classified as red list endangered, meaning that they are vulnerable to extinction. Roughly 879,000 hedgehogs remain in the UK, a massive drop from an estimated 30-36 million in the 1950s, with rural populations especially vulnerable. Hhonic can help hoggies to stay healthy in the wild, allowing them to breed and avoiding the need to be admitted to rescues.

Hhonic is already being used in seven rescue centres, with several more wanting to try it, and Mr Brand, brilliant vet to Minnie's Wildlife Rescue, has also kindly offered to have Hhonic brochures in his veterinary practice.

**Hhonic can be purchased directly from Debby at Minnie's Wildlife Rescue - text 07463 592992 or email [Hhonic@proton.me](mailto:Hhonic@proton.me).**

Proceeds go towards supporting Minnie's Wildlife Rescue and Hedgehog Hospital, Bussage, helping them to support wildlife from the hilltop & beyond.

### Top 10 tips to make your garden hedgehog-friendly

1. Link your garden with Hedgehog Highways
2. Make your pond safe with a ramp
3. Create a wild corner
4. Deal with netting and litter
5. Put out food and water
6. Stop using chemicals
7. Check before strimming
8. Be careful with bonfires
9. Make a home for hedgehogs
10. Become a Hedgehog Champion



## VILLAGE HISTORIES: SYCAMORE GROVE...

The small development of Sycamore Grove, off Middle Hill, Chalford Hill, is relatively new. But did you know that it used to be the village football pitch?

The Bisley Common enclosure map of 1869 shows the field numbered 188 and outlined in red; red plots were sold to defray the expenses of the enclosure. Plot 188 was sold to William Woodruffe Kearsay, a Stroud solicitor, for £105. It comprised 4 acres and 26 perches (a perch - also called a pole or rod - is about 25.29 square metres).



The 1869 enclosure map of Bisley Common (Gloucestershire Archives)



1937-8 Chalford football team

In the early days, Chalford Football Club played on the pleasure ground by France Lynch, before moving to field 188, then known as The Sycamores, it being edged by sycamore trees. The field, rented first from W.F. Drew, a local builder, then from Mr Young, the farmer, was far from ideal as a pitch - a 12ft drop down to one of the corners made taking corners and crossing the heavy leather ball from the bottom wing quite a problem!

With no nearby buildings, the team used The Fleece pub (near Chalford Hill Post Office) to change, the AGM of 1902 recording that 'The Sycamores will again be the venue for the home matches and the Fleece Hotel the club's headquarters.'

However, the minute books in the 1920s also show a number of recurring problems with The Sycamores, one of which was the walls needing regular repair.



The Fleece Inn closed in the 1930s, by which time the team were using the changing rooms above the Mechanics Arms (now the Old Neighbourhood Inn). This arrangement continued into the 1940s and 50s, the pounding of the team's studs on the lane leading from the pub to The Sycamores pitch a local tradition.



Above: The Sycamores in 1961  
Below: Sycamore Grove today

1956/7 was the last season played at The Sycamores, by which time plans were well afoot to give Chalford Football Club a permanent home at Highfield Way.

With grateful thanks to Roger Carnt

For more local history, visit [www.eastcombearchive.org.uk](http://www.eastcombearchive.org.uk), and the [Eastcombe & Bismore Local History Group](#) and [Chalford Parish Local History Group](#) on Facebook.



Bring your friends and family for a day of fun

### CHALFORD HILL SUMMER FAYRE

Saturday 6<sup>th</sup> June | 11am - 3pm  
Chalford Hill Primary School

BBQ & BAR  
BOUNCY CASTLE · RAFFLE  
CAKE & TEA TENT · LIVE MUSIC  
STALLS · FACE PAINTING · TOMBOLA  
PLANTS · CHILDREN'S ACTIVITIES

**FREE ENTRY**

### HILLTOP CAFE CHURCH

Christian Worship for those of all faiths and none.

**Sunday 21<sup>st</sup> June**  
2.30pm  
EASTCOMBE VILLAGE HALL

BROUGHT TO YOU FROM  
THE PARISH OF BUSSAGE & EASTCOMBE

# SLOW

## Hedgehogs

Please Drive Carefully  
Thank You

SAVE THE DATE

### WHAT'S ON in JUNE?

- 6 June:** Chalford Hill Summer Fayre, Chalford Hill Primary School, 11am-3pm
- 7 June:** Hilltop Gardening Club meeting, Eastcombe Village Hall, 7.30pm
- 6-7 June:** Christ Church, Chalford, Festival Weekend (*see Page 6 for details*)
- 12 June:** Plant Sale, Chalford Sports & Social Club, 10am-12 noon.
- 13 June:** Casual Six, Chalford Sports & Social Club, 7pm-midnight
- 16 June:** Eastcombe WI Meeting, 7.15pm, Eastcombe Village Hall
- 17th JUNE: NEWSLETTER DEADLINE**
- 20 June:** Chalford Sports & Social Club Beer Festival., 2-10pm/Hilltop Film Club, Eastcombe Village Hall, 7.30pm
- 21 June:** Hilltop Café Church, Eastcombe Village Hall, 2.30pm
- 26 June:** TKSA Paint & Sip Evening, 6.30pm-9pm, Thomas Keble School
- 28 June:** Chalford Car Boot Sale, Chalford Sports & Social Club, 10am-12pm

## NAME THAT VIEW!

How well do YOU know our area?



Did you spot that May's photo was of the view across France Lynch allotments?

Can you identify the location of June's photo?

The answer will be revealed in the July issue.